

ISIScan™ version 2.71 InfraXact™ Check Cell Update

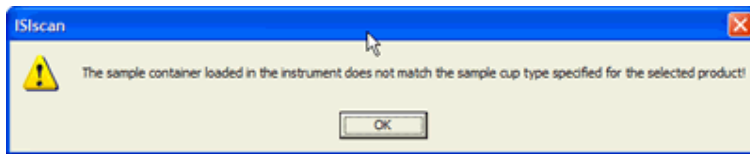
Background

The InfraXact™ uses an RFID transceiver and an RFID chip in the sample cups to transfer information to ISIScan™. This information includes Cup type, cup serial number and temperature as well as sample information if the Sample Station is used. The cup type is verified against the configuration settings in ISIScan™ to ensure that the proper cup type is used. Each sample cell has a unique cup type code.

To prevent non-Check cells from being analyzed in the Check cell product, the requirements for identifying the Check cell have been enhanced.

In ISIScan™ version 2.31, a small cup type would match the InfraXact™ Check Cell. In version 2.71 and higher, it must be the **Check cell STD Feed (Small Cup)**.

In ISIScan™ 2.71, if the small cup type is used in an operation profile for the Check cell, the following error is displayed: **"The sample container loaded in the instrument does not match the sample cup type specified for the selected product!!"**



Update

To analyze a Check cell on the InfraXact™, the Check cell product must be updated to use the proper cup type. Please follow the instructions below:

1. Update ISIScan™ to version 2.71 or higher.
2. Download the [Check Cell Utility Zip file](#) from this link. Extract the .exe file to your \Program files \Infrasoft International\ ISIScan directory.
3. Double click the .exe file to run the utility.

A message will list the number of records that were updated. The utility made an Operations profile with the new Check cell cup type and updated the Check cell product. The Check cell is now ready to use.

Please contact your FOSS product specialist with any questions.

Dedicated Analytical Solutions

FOSS Analytical AB
Pål Anders väg 2
Box 70
SE-263 21 Höganäs
Sweden

Tel +46 42 36 15 00
Fax +46 42 34 03 49
E-mail info@foss.dk
Web www.foss.dk

Skånes Provinsbank, Helsingborg
Bank account No. 1208 010 3113
Bank giro 145-6458
Postal giro 68 72 70-9
Corporate ID No. 556105-6564