

Technical Note

2008-04-29

Software setup for using NIRS 5000/6500 sample cups with XDS Rapid Content Analyzer with Solids Module and ISIScan

The XDS RCA with Solids Module is equipped with a horizontal transport system, which is originally designed for use with the XDS Coarse Granular Cell. It is now possible to use a number of the ISI sample cup types from a NIRSystems 5000/6500 Transport system on an XDS Rapid Content Analyzer with Solids Module:

- Quarter Cup
- Half Cup
- Natural Products Cell

To use the above cup types on the XDS RCA with solids module, a Sample Cup Support in combination with a cup type specific adapter is required.

Software setup

For use of full software functionality with the XDS Cup Adapters it is necessary to have

- XDS mother board "Power PC" firmware version 36 or higher
- ISIScan version 3.10.1 or higher

XDS instruments delivered from xx.xx.2008 will have "PowerPC" version 36 already when shipped.

Dedicated Analytical Solutions

FOSS Analytical AB
Box 70
SE-263 21 Höganäs
Sweden

Tel +46 42 36 15 00
Fax +46 42 34 03 49
E-mail info@foss.tecator.se
Web www.foss.dk

FOSS

© FOSS Tecator AB 2004, all rights reserved

1 Update ISIsScan to version 3.10.1

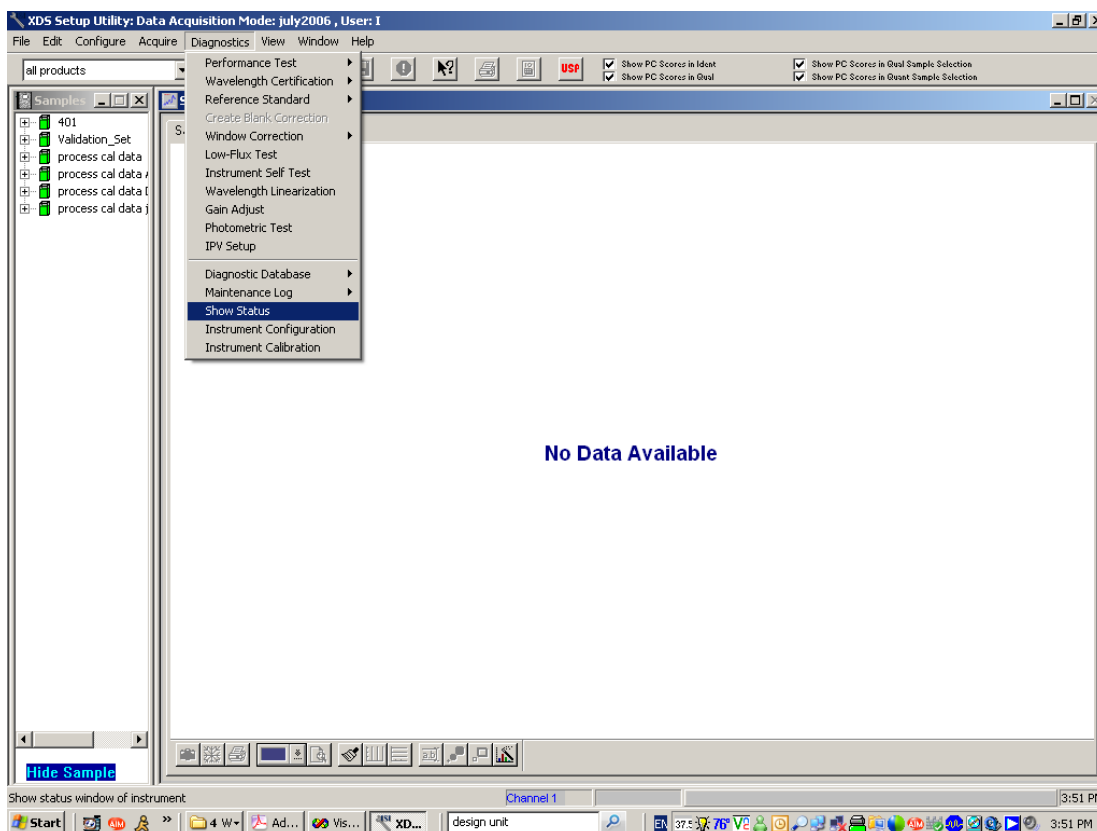
ISIsScan needs to be updated to version 3.10.1. Users already having ISIsScan version 3 can download the update free of charge from the download section of www.winisi.com. Customers having older ISIsScan versions must purchase an upgrade to version 3.

Please make sure that ISIsScan version 3.10.1 is installed before continuing with updating the XDS "PowerPC" firmware.

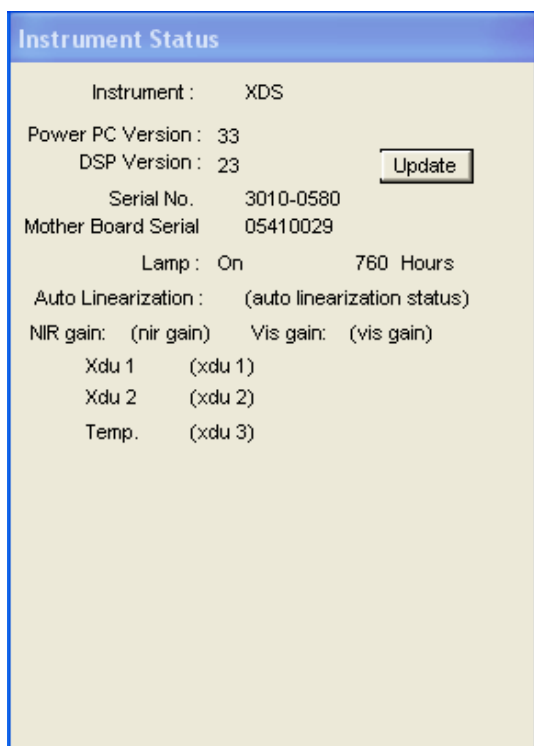
2 Update the XDS firmware

The XDS motherboard firmware ("Power PC") must be updated to version 35.

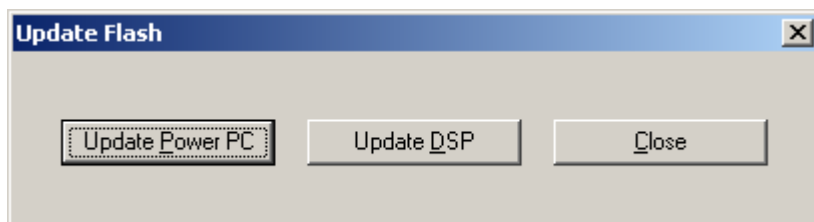
1. Start XDS Setup Utility.
2. Connect to the XDS Instrument. Make sure the instrument is not already connected to ISIsScan. If so, disconnect it before connecting with XDS Setup Utility.
3. From the menu, select *Diagnostics* and *Show Status*



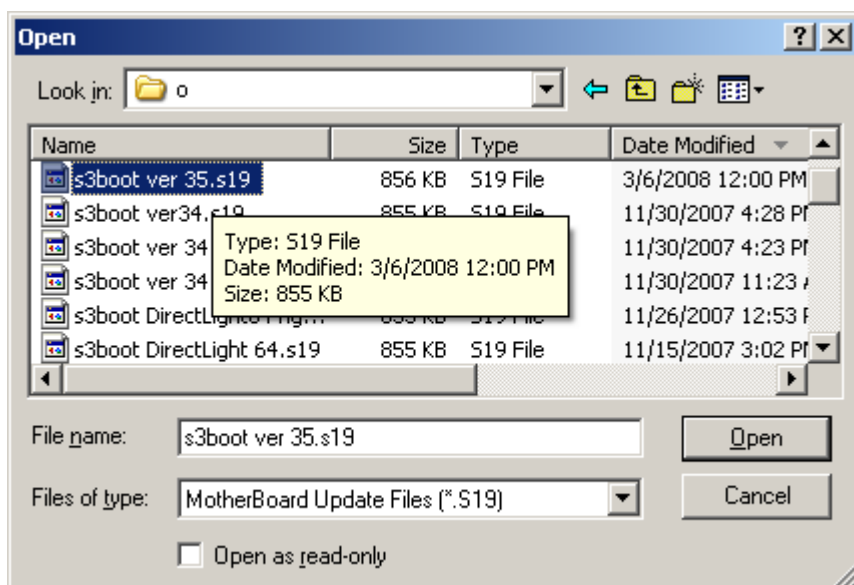
4. If the dialogue box shows "Power PC Version: 35" (or higher) the XDS firmware is already updated. Otherwise click the "Update" button:



4. In the "Update" dialog click on "Update PowerPC":



5. Move to the directory
 C:\Program Files\Infrasoft International\ISIScan\Drivers\XDSFirmwareUpdate
 and select the file "s3boot ver 36.s19" (to find this directory and file, ISIScan 3.10.1 must be installed first):



6. Click “*Open*”.
7. Wait until the upload has finished successfully. Please make sure that the completed upload is confirmed by the software before continuing with next step.
8. Disconnect XDS Setup Utility from the XDS instrument.
9. Turn off the power to the XDS instrument and restart the instrument. The upload according to step 7 must be completed before the XDS instrument is restarted. If the XDS instrument is restarted too early the upload may need to be repeated. In worst case the EPROM chip can be destroyed and will need to be replaced if the upload is interrupted.

3 ISIs can and the XDS Sample Cup Adapters

When running an XDS Rapid Solids Module with ISIs can version 3.10.1 following *Cup types* can be selected in the *Operations Profile*:

Stationary	For measuring without moving the sample cup.
Moving	For the XDS Coarse Granular Cell. The XDS will scan in eight positions.
Rectangular 1/4	For use of the ISI Quarter Cup. The XDS will scan in three positions.



Rectangular ½	For use of the ISI Half Cup. The XDS will scan in six positions.
---------------	--



Natural Products Cell	For use of the ISI Natural Products Cell. The XDS will scan in six positions.
-----------------------	---

